



TRAIN FOR **ANY** SCENARIO

## CONTENTS

Laser Shot has developed cutting-edge virtual firearm training and simulations since 1999. The key to the full-spectrum immersive experience is the attention to detail dedicated to every aspect of the simulator – from the vivid HD projection system to the true-to-life look, feel, and function of Laser Shot simulated weapons.

The Laser Shot team of software engineers, live-fire range specialists, and firearm engineers provide virtual training solutions to federal, state, and local law enforcement units while strictly adhering to training doctrine.

Laser Shot simulators feature the smallest footprint, fastest setup time, and most options in the industry and are utilized by departments in every state. These systems are designed from the ground up for ease-of-use by the end user with no contractor support required.

The following summarized list of products and services will serve to demonstrate how Laser Shot represents a low-risk, best-value solution to the training needs of modern law enforcement.

<b>2</b>	<b>SIMULATORS</b>
4	SIMRANGE // ULTRA-SHORT THROW SIMULATOR
6	SIMRANGE 2.0 // LOW-LIGHT/FLASHLIGHT SCENARIO CAPABILITIES
8	MMTS COMPACT
8	MMTS SUBCOMPACT
10	CURVE // IMMERSIVE CURVED SCREEN SYSTEM
12	MVS // MODULAR VIRTUAL SHOOT HOUSE
<b>14</b>	<b>COURSEWARE</b>
16	JTS // JUDGMENTAL TRAINING SOFTWARE
17	JTS EDITOR // CREATE ENDLESS CUSTOM SCENARIOS
18	JTS CONTENT CREATION
20	KDR // KNOWN DISTANCE RANGE
21	PMI LE // PRELIMINARY MARKSMANSHIP INSTRUCTION
22	COF // COURSE OF FIRE
22	SKILL DRILLS
<b>25</b>	<b>WEAPONS &amp; ACCESSORIES</b>
26	SIM WEAPONS
28	SIMULATED NON-LETHAL WEAPONS
28	COUNTING MAGAZINES
30	CROSSHAIR // MAGNIFIED OPTICS SIMULATOR
32	C/CAT // COVER/CONCEALMENT ANGLE TRAINER
<b>35</b>	<b>LIVE-FIRE RANGES</b>
36	CONTAINER RANGE // COMPACT LIVE-FIRE FACILITY
37	MOBILE RANGE // TOWABLE SHOOTING SOLUTION
38	MSAR // MODULAR SMALL ARMS RANGE
39	THERMAL SHOT // LIVE-FIRE VIRTUAL TARGETRY SYSTEM
39	SVALIN BULLET TRAP
<b>40</b>	<b>PAST PERFORMANCE</b>

UTILIZED BY THE

# FEDERAL LAW ENFORCEMENT TRAINING CENTERS

SINCE 2009

**LASERSHOT.COM**  
(281) 240-1122  
SALES@LASERSHOT.COM  
INFO@LASERSHOT.COM

CORPORATE OFFICE  
4214 BLUEBONNET DRIVE  
STAFFORD, TEXAS 77477

SHOOTING RANGE TECHNOLOGIES  
730 SARTARTIA ROAD  
SUGAR LAND, TEXAS 77479

# SIMULATORS

- 4 SIMRANGE // ULTRA-SHORT THROW SIMULATOR
- 6 SIMRANGE 2.0 // LOW-LIGHT TRAINING
- 8 MMTS COMPACT
- 8 MMTS SUBCOMPACT
- 10 CURVE SIMULATOR
- 12 MODULAR VIRTUAL SHOOT HOUSE

Laser Shot simulators lead the market in durability, performance, options, and software capabilities with the largest and most in-depth judgmental scenario library available.

The following training solutions feature technology that has been designed and developed with input from law enforcement subject matter experts.



**COURSE OF FIRE** (pg. 22)  
RANGE QUALIFICATION SOFTWARE

**SIM7** (pg. 27)  
TRAINING PISTOL

**SIM BATON** (pg. 28)  
MOTION SENSING JTS INPUT DEVICE



**MMTS COMPACT** (pg. 8)  
POWERFUL MILSPEC PORTABLE SIMULATOR

# SIMRANGE™

## ULTRA-SHORT THROW SIMULATOR

Laser Shot's SIMrange™ enables ultra-short throw projectors with integrated hit detection cameras to be installed within 18" of the projection surface, reducing the overall footprint required. The SIMrange™ is scalable and can be delivered in multiples of three lanes per screen, allowing for expansion to meet throughput requirements.

In the past, firearms simulators required installing an independent laser-hit detection camera adjacent to the projector, requiring careful positioning and calibration during each setup. The SIMrange™ eliminates this task by integrating the laser-hit detection camera inside the projector, ensuring constant alignment and readiness to begin training.

The SIMrange™ can be placed within 18" of the projection surface due to its ultra-short throw technology. This enables smaller rooms or spaces to be converted into virtual ranges for safe, effective training without the need for ballistic facilities or live weapons and ammunition.

The SIMrange™ is typically sold in a package with Laser Shot's Judgmental Training Software (JTS) for use-of-force training. These packages include various training devices, such as simulated tasers, OC spray, and other non-lethals.

- ▶ Ultra-short throw capability within 18" of the projection surface
- ▶ Integrated hit detection camera
- ▶ Fastest setup time of any simulator in its class
- ▶ Ceiling-mounted capability



## SETUP IN 10 MINUTES OR LESS



### VIRTUAL ADVANTAGE

Simulator training environments are completely independent of live-fire range access or weather conditions. Students can maintain aggressive training tempos and instructors can provide better training oversight to beginner, intermediate, and advanced marksmen. Simulators develop key technical skill sets that build proficient and experienced law enforcement officers (LEO).

Use-of-force scenarios challenge individuals' decision-making skills and reaction times to potential threats that LEO's may encounter. Through repetitive simulations with instructor-controlled threat escalation or de-escalation, leaders can see how LEO's respond in active shooter situations and train to build confidence in their skill sets. Simulators with use-of-force training capabilities and a user-friendly built-in scenario editor enable instructors with basic computer skills to create or modify complex scenarios that are relevant to training.

Simulation builds upon core marksmanship training fundamentals and significantly challenges officers' intermediate and advanced skills. Small arms weapon qualification is a fundamental requirement for all officers, and as firearm proficiency is a perishable skill, it requires repetitive training to maintain and improve. SIMrange™ courseware was written in adherence to the standards set by the U.S. military and top US law enforcement agencies, and builds readiness and skills through repetitive Preliminary Marksmanship Instruction (PMI) training.

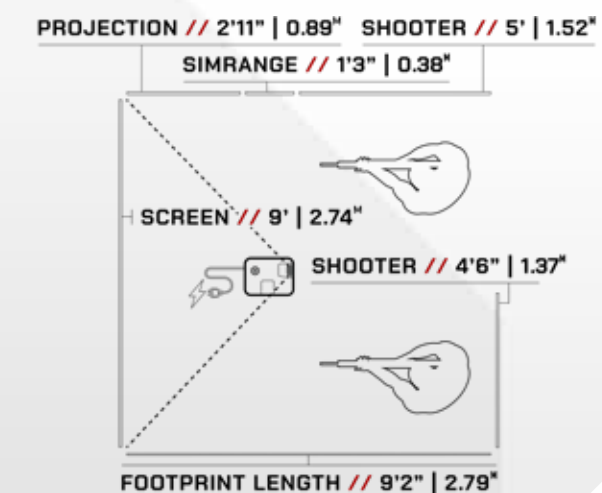
### SMALLEST FOOTPRINT // FASTEST SETUP TIME

The SIMrange™ features a built-in hit detection camera. This simple innovation significantly reduces the time needed for setup and calibration, compared to other simulators. The operator station and accessories consist of two monitors and keyboards for individual control of instructor station and primary screen. All accessories are packed in a ruggedized, wheeled hard case for transport. SIMrange™ is considered a "plug and play" solution that is designed specifically for the marksmanship training needs of law enforcement.

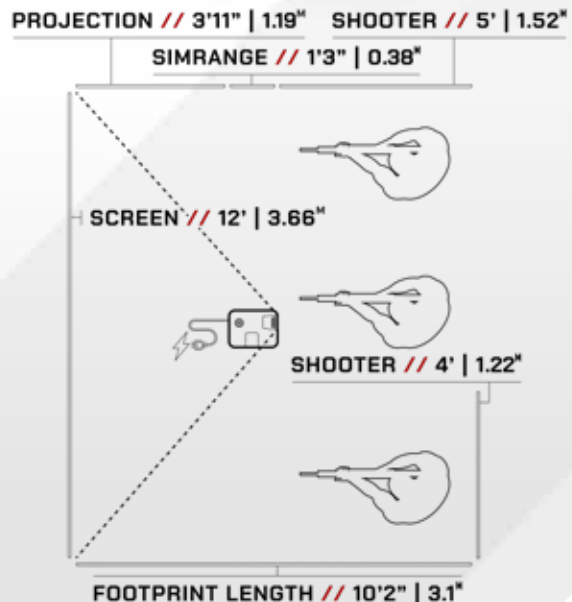
Setting up the SIMrange™ is an intuitive process that requires very little time or manpower. After one introductory training session, a single operator will be able to complete the setup, which includes camera calibration, and be ready for training in 10 minutes or less. Ultra-short throw technology for projection and hit detection capabilities make Laser Shot's SIMrange™ the smallest footprint in the industry, which can be set up in a 10'x10' room or area, and can operate in most light environments.

### SIMRANGE ROOM REQUIREMENTS

9' SCREEN // 2 SHOOTING LANES



12' SCREEN // 3 SHOOTING LANES



# SIMRANGE 2.0

## LOW-LIGHT TRAINING SIMULATOR

Laser Shot's SIMRange™ 2.0 features all of the same capabilities of the original SIMRange™ while also enabling the user to perform low-light training scenarios. This is achieved through the integration of a second hit detection camera that tracks the movement of Laser Shot's IR Flashlight; a simulated flashlight that mimics the real-life feel and function of flashlights used by officers in the field.

Laser Shot's Judgemental Training Courseware features a library of over 900 training scenarios. Every scenario is compatible with the low-light training technology of the SIMRange 2.0. This is accomplished by using infrared technology to cast a life-like illumination upon a scenario that has been artificially dimmed to mimic a low-light environment.

- ▶ Ultra-short throw capability within 18" of the projection surface
- ▶ Integrated hit detection camera & second camera for low-light detection
- ▶ Fastest setup time of any simulator in its class
- ▶ Ceiling-mounted capability

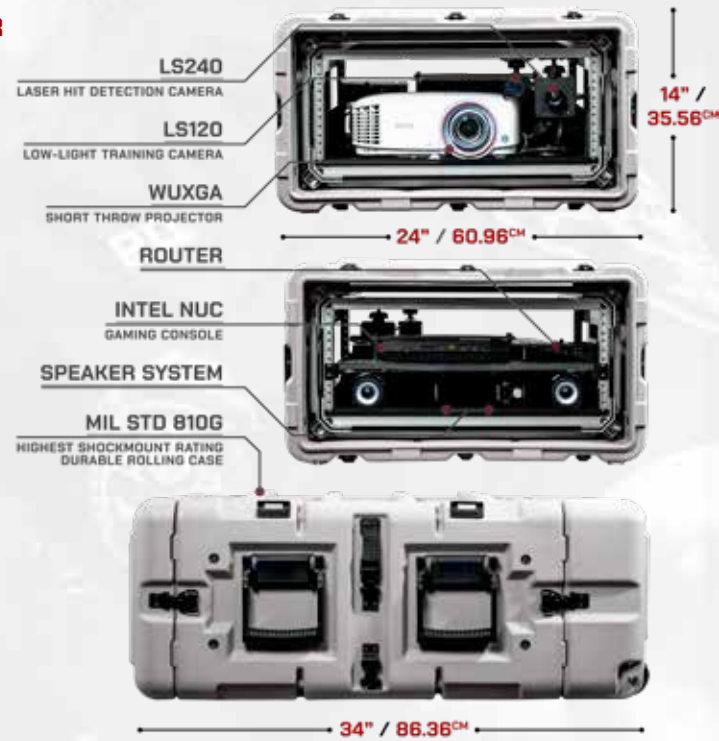


# MMTS COMPACT

## POWERFUL MILSPEC PORTABLE SIMULATOR

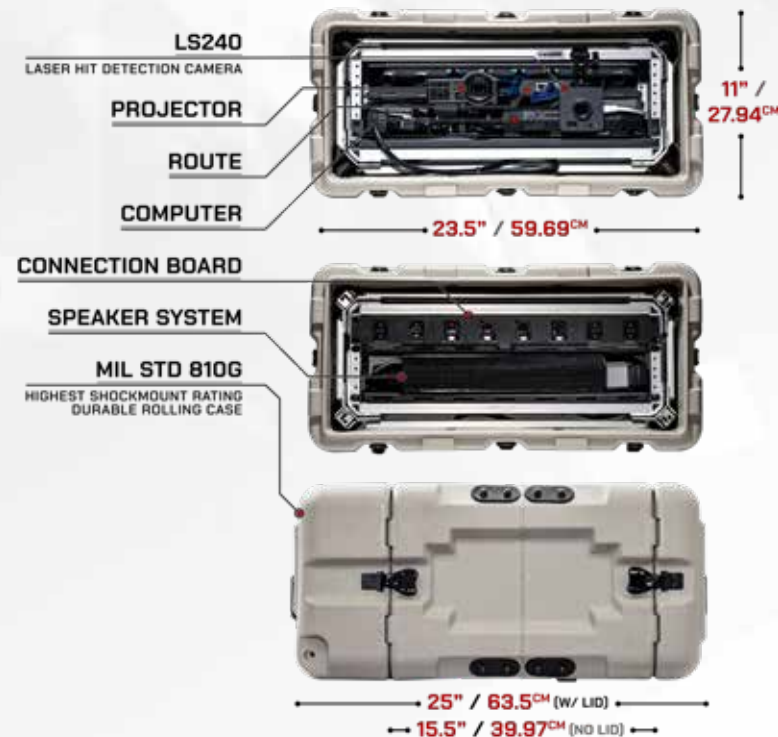
The compact version of the MMTS houses many of the same features as the full size model, while reducing footprint size, weight, and cost. This single-console simulator utilizes a similar MIL STD 810G case with a slightly smaller stature and a projector with shorter throw. The MMTS Compact's single console design utilizes a laptop as an instructor station.

- ▶ MIL STD 810G durable rolling case (highest shockmount rating)
- ▶ Single-console performance
- ▶ Integrated instructor control station (ICS)
- ▶ Vivid 1080p projection



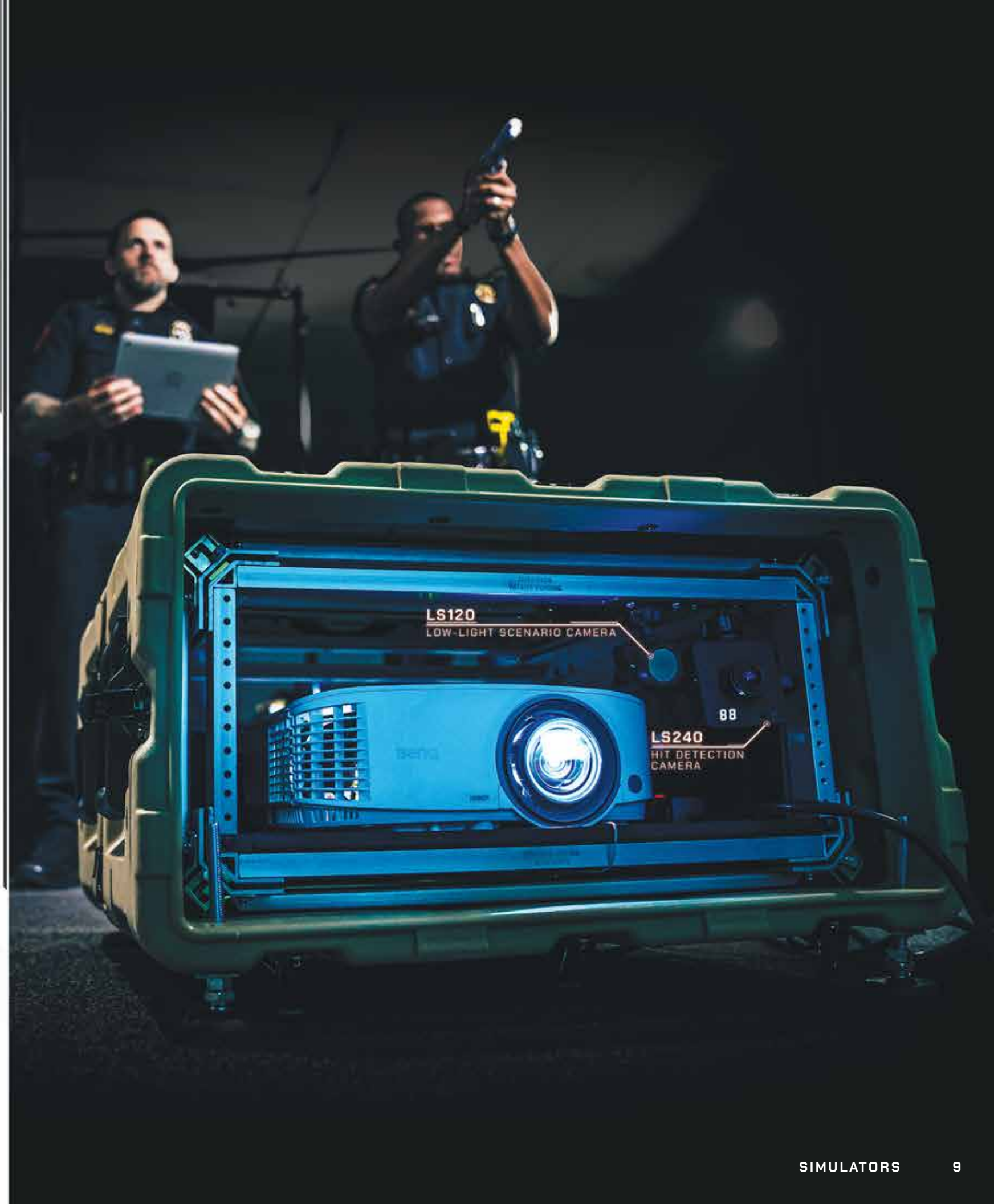
# MMTS SUBCOMPACT

## LIGHTWEIGHT & LOW PROFILE



The latest and most streamlined version of the MMTS is the subcompact, measuring 23.5"x25"x11" and weighing only 60lbs. This version is ideal for rapid deployment by a single operator, and is capable of utilizing training spaces as small as 9'x7'x20'. It's single console is as powerful as those used in larger MMTS versions and is capable of being loaded with the same powerful and user-friendly courseware that ranks the platform as a whole at the apex of virtual marksmanship and use-of-force training systems.

- ▶ MIL STD 810G durable rolling case (highest shockmount rating)
- ▶ Single-console performance
- ▶ Integrated instructor control station (ICS)





# CURVE

## IMMERSIVE CURVED SCREEN SYSTEM

Laser Shot has modernized the immersive virtual training industry by creating a curved, seamless screen, providing an uninterrupted image, offering the most realistic virtual firearms training experience. Officers can fine tune their small arms fundamentals with Skill Drills training modules as well as put themselves into realistic training simulations with judgmental training scenarios.

- ▶ Seamless curved projection screen
- ▶ Image warping/blending software
- ▶ Structural supports



# MVS

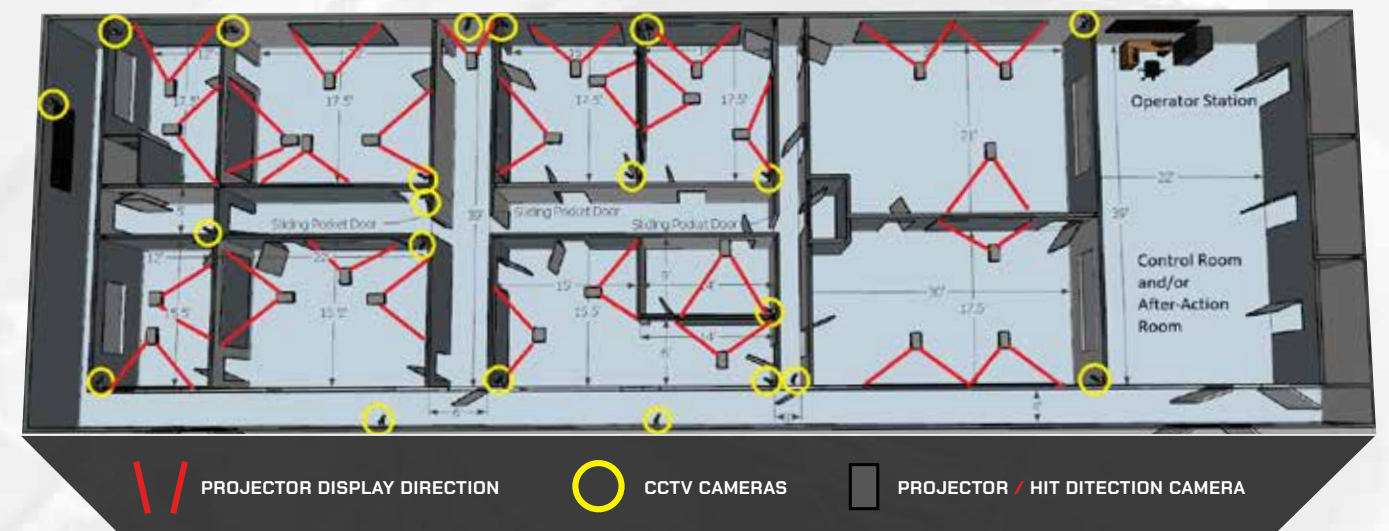
## MODULAR VIRTUAL SHOOTHOUSE

An important factor in CQB (Close Quarters Battles) training is the ability to enter and clear rooms without interfering with the projection or hit detection. Laser Shot solved this issue by implementing SIMrange™ ultra-short throw projection technology. The SIMrange™ is installed overhead to allow for freedom of movement without obstacles or trip hazards, and to enable officers to approach virtual targets within 3' without interrupting the projection. Hit detection cameras are embedded in each SIMrange™ unit to capture the impact location of the training weapon. Laser Shot's Modular Virtual Shoot House is easily expandable and re-configurable to meet the customer's requirements should they ever change in the future.

Laser Shot provides virtual targetry solutions in existing MVS facilities, both ballistic and non-ballistic, or classroom environments. Likewise, Laser Shot offers a variety of ballistic or non-ballistic structures that provide customers with a turn-key solution.

Laser Shot's virtual targetry operates with simulated weapons that emit lasers for a more controlled, safety conscious training or fitted with thermal cameras that allow for the usage of the officer's own service weapons and ammunition. Providing the ballistic construction of the facility, Laser Shot can accommodate either or both technologies.

Laser Shot Virtual Shoot House (LVS) courseware simulates realistic close quarter engagement scenarios with life-sized 3D character models to mimic the movements and reactions of real humans. LVS incorporates an easy to use and intuitive user interface allowing the instructor to quickly manipulate and configure the training system from the operator station. The LVS courseware allows for the authoring of scenarios and offers an extensive after action review capability which provides detailed data on shot placement.





# COURSEWARE

- 16 JTS // JUDGMENTAL TRAINING SOFTWARE
- 17 JTS EDITOR // CREATE ENDLESS CUSTOM SCENARIOS
- 18 JTS CONTENT CREATION
- 20 KDR // KNOWN DISTANCE RANGE
- 21 PMI LE // PRELIMINARY MARKSMANSHIP INSTRUCTION
- 22 COF // COURSE OF FIRE
- 22 SKILL DRILLS

Laser Shot recognizes that the key to successful training comes from a combination of both hardware and software. To that end, Laser Shot continually updates a library of realistic, effective, and doctrine-based courseware with our in-house team of software engineers in conjunction with law enforcement subject matter experts.

By writing our courseware straight from law enforcement and federal qualification manuals, officers are able to train for live-fire events that they may encounter in the future.

Laser Shot understands that organizations may have different training needs and works with end users to develop specific courseware that meets their requirements.





# JTS

## JUDGMENTAL TRAINING SOFTWARE

Judgmental Training Software (JTS) challenges cognition through the use of real life interactive simulated scenarios. The scenarios were designed based on real life exposure to emergent threats in the law enforcement and military communities. As the student reacts to the scenarios presented to them, the instructor has the ability to manipulate the scenario based on the student's presentation of their organization's force continuum. The instructor also has the ability to save progress and conduct after action reviews (AAR's) which aid in continued coaching, mentoring, and reinforcing organizational standard operating procedures.

With over 1000 training scenarios to choose from in the JTS library, from responding to a domestic disturbance or burglary to more complex branching scenarios such as active shooter and concealed carry scenarios, the instructor has the ability to challenge the student all while reinforcing the force continuum.

In a controlled environment the instructor can provide an atmosphere indicative of situations where the student may be required to take cover, move towards/away from a perceived threat, and draw and fire from behind cover, all while verbally working through the threat as if their life was truly in danger. Included in this package is a remote tablet used as the instructor station, which does not restrict this instructor to a static position. This allows for the instructor to give personal critique and display a shot by shot after action review to the student.

While training, the instructor can manually direct the scenario to create multiple outcomes based on the student's interaction, reinforcing communication and deeper understanding of the use-of-force continuum.

## JTS EDITOR

An optional add-on is a user-friendly built-in scenario editor, which enables instructors with basic computer skills an opportunity to effortlessly create or modify complex scenarios to their specifications.

Easy to use tools such as advanced zoning options, and simple drag-and-drop controls support the act of importing scenarios into the design canvas. This creates a simple platform for generating new simulations and branches that are automatically generated and displayed in a top-down, real-time 3D, hierarchical view.

## JTS INSTRUCTOR TABLET



**Note:** Tablet included with SIMrange packages and packages without instructor stations.

CUSTOMER SUPPLIED LOCATION

# CREATE ENDLESS CUSTOM SCENARIOS

TAILORED FOR YOUR DEPARTMENT

HIRED ACTORS



## JTS CONTENT CREATION TRAINING

Laser Shot's JTS videography team will travel to the customers site to teach them how to use the JTS Editor package – a simulator add-on comprised of software and a camera system that will enable the customer to film and edit an unlimited number of scenarios for their system. Ultimately, it is up to each client to assess their available resources and decide which option would best empower their training regimen. Please note that these services are available at a date later than the delivery of a simulation system, and many clients opt for annual scenario development packages.

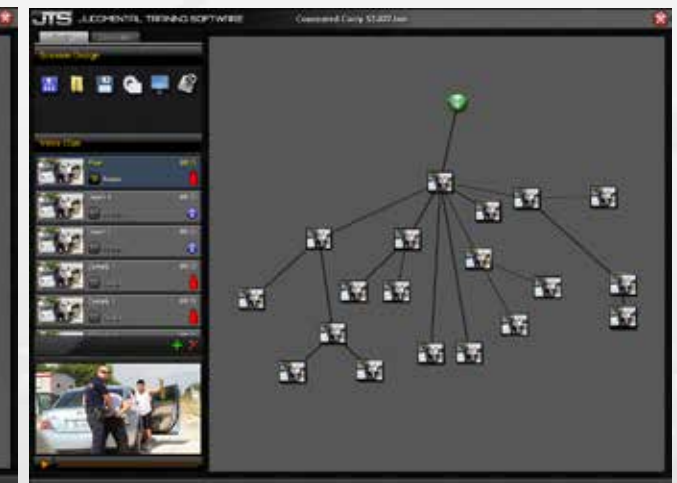
## CUSTOM CONTENT DEVELOPMENT

Laser Shot will send the entire videography team behind all 1,000 existing scenarios in the JTS library to the customer's site to direct and film a predetermined number of scenarios within the time allotted. Upon returning to Laser Shot headquarters, this team will edit this footage into interactive JTS Scenarios to be remotely uploaded to the client's simulation system. These scenarios can remain exclusive for the client, or added to the JTS library to be sold to future clients.

## SCENARIO CREATION SOFTWARE



HIT ZONE MAPPING



BRANCHING SCENARIOS

# JTS: CONTENT CREATION

JTS features a library of over 1000 scenarios. However, Laser Shot offers two services for clients with specific training requirements and unique challenges in the field: custom content development and/or training.



# PMI LE

## PRELIMINARY MARKSMANSHIP INSTRUCTION (LAW ENFORCEMENT)

A self-paced interactive courseware designed specifically for small arms development, sustainment and qualification, and adheres strictly to the doctrines of all services. Officers practice grouping and advance to the zeroing. When the officer achieves an optimum shot group, the zeroing process will walk them through adjusting physical sights on simulated weapons. Upon successful zeroing, the shooter will transition to a qualification course and qualify using all tables and appropriate rounds.

An AAR will illustrate each shot location and differentiate tables by color. Final scores will post for review and results can be printed or exported to a spreadsheet for training records. PMI features a comprehensive library of training courses, such as standard BRM popup ranges, pistol qualification ranges, KD practice ranges, ALT-C, and Military Police qualification ranges. With a 14' portable screen four lanes can be simulated simultaneously. Laser Shot maintains accurate perspective calculated for exact target size to distance ratio. Additional lanes can be added by networking more systems.

# KDR

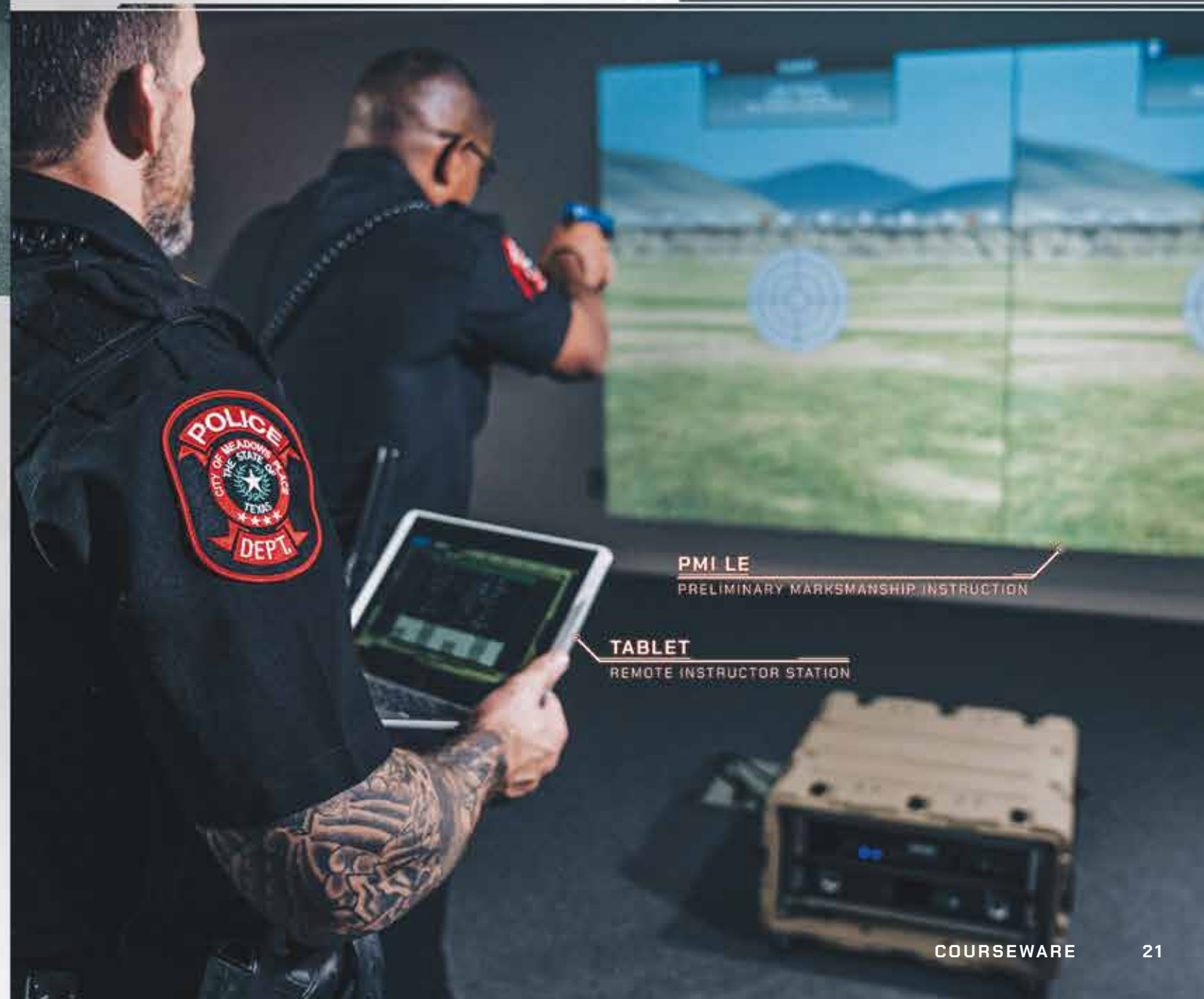
## KNOWN DISTANCE RANGE

Featuring milspec targetry in vivid 1080p virtual immersion, Known Distance (KD) Range is a fundamental element of Laser Shot's comprehensive marksmanship instruction curriculum, adhering to the doctrinal standards of military field manuals with targets 5 - 500 meters. This virtual version of real-world marksmanship instruction includes functions designed to enhance the officer's training experience and provide instant feedback to the instructor, such as a responsive LOMAH indicator (Location of Misses and Hits) in the peripheral view of the officer, which displays instant shot placement without the need to interrupt the sight picture.

Additionally, this powerful courseware visualizes both POA and POI (point-of-aim and point-of-impact) to the instructor to clearly conceptualize the relationship between where the weapon is aimed and the impact location of the virtual bullet based on the type of firearm / round type ballistics and distance in the virtual environment. These added features greatly reduce the amount of time required for an officer to become proficient with their weapon system at varied distances.

## CURRICULUM

A KD range has three primary objectives: fire tight shot groups at a known distance, make sight adjustments at range while experiencing the effects of wind and gravity, and marksmanship testing. The firing task on a KD range is an intermediate step toward the firing task of an officer. Information concerning the precise hit-or-miss location of every bullet fired is provided. KD firing is conducted with a single, clearly visible target at a known distance, and the officer can establish a position that provides a natural point of aim on that single target.



# COURSE OF FIRE

## BASIC MARKSMANSHIP INSTRUCTION

Laser Shot's Course of Fire™ supports qualification requirements for Basic Marksmanship Instruction by enabling instructors at any level of computer knowledge, skill, or ability, to replicate any physical firing range and target condition. Course of Fire provides up to 4 individual qualification lanes per virtual range set, all operated through a single dedicated IOS or remote tablet. The user-friendly GUI features include a simple menu interface for selecting and inputting shooters, selecting courses, course editing, and developing and exporting training reports to reflect student performance and progress. Course of Fire has unique and user-friendly course editor options to create virtually any qualification course.

# SKILL DRILLS

## ADVANCED MARKSMANSHIP PROFICIENCY

Skill Drills are advanced drills that significantly increase marksmanship proficiency. Laser Shot Simulations skill building exercises develop strong transferable skills that carry over in to live-fire applications. Included are various training drills that focus on the improvement of officers' speed, accuracy, and reaction times.

Designed by subject matter experts in advanced firearms training, drills are designed to focus on critical eye and hand coordination while introducing stressors like timers, no shoot targets, reflexive fire, and head-to-head competition with other officers to reinforce urgency in speed and accuracy. Each drill has adjustable settings to allow for the progression of training and determining degree of difficulty required to challenge all skill levels to perform better. Drills can be used with any simulated weapon types.





M4 SBR RECOIL  
SIMULATED RECOIL FIREARM

COUNTING MAGAZINE

## WEAPONS & ACCESSORIES

- 26 SIMULATED SMALL ARMS
- 28 SIMULATED NON-LETHAL WEAPONS
- 28 COUNTING MAGAZINES
- 30 CROSSHAIR // MAGNIFIED OPTICS SIMULATOR
- 32 C/CAT // COVER/CONCEALMENT ANGLE TRAINER

In order to fully immerse trainees and provide unforgettable muscle memory, a comprehensive virtual training system should include realistic simulated weapons or recoil kits for real firearms.

Laser Shot designs, manufactures and assembles a variety of simulated firearms solutions ranging from sidearms to crew-served weapons at our state-of-the-art engineering facility in Sugar Land, Texas.



**SIM7**  
TRAINING PISTOL

# SIMULATED SMALL ARMS

Laser Shot's in-house team of firearm engineers has created simulated versions of countless small arms and are constantly adding more models to the available collection.

## SIMULATED RIFLES

A training weapon is only as realistic as its trigger pull weight, take-up, and reset. Laser Shot's team of firearm engineers build our simulated rifles around true-to-life trigger mechanisms and equip them with realistic form, fit, and function to that of the M4/M16 series of rifles. Available in dry-fire or recoil configurations, these training weapons are currently used by elite military and law enforcement units worldwide to instill unforgettable muscle memory during virtual phases of their training regimens.

Laser Shot is the first simulator company to design our pneumatic recoil to be filled inside barrel reservoirs instead of the magazines. The barrel reservoirs can be filled with an adapter on a CO2 tank with siphon tube. Since magazine changes are required more frequently during normal training, the seals are commonly worn out and cause increased air leaks. Laser Shot improved this feature by leaving the magazines inert and constructed air reservoirs inside the barrels.

No additional accessories to the weapon are required that would not normally be standard issue. This design allows for a higher fidelity simulated weapon. Synthetic audio is not necessary because the mechanical action is sufficient to replicate the cracking of the weapon being fired, assisting in working toward mitigating flinching or anticipation of recoil.

**SIM4**



**M4 RECOIL**



**Note:** RCD is optional (not included w/ basic M4 package)

**Note:** Blue accents are optional upgrade



**M4 SBR RECOIL**  
SIMULATED RECOIL FIREARM

## SIMULATED SHOTGUNS

Laser Shot's simulated shotguns feature functional pump action and true-to-life form, fit, and function. The SIM870 (inert) and 870 Recoil are modeled after the iconic police shotgun and are ideal for virtual qualifications and drills.

**SIM870**



**870 RECOIL**



## SIMULATED PISTOLS

Designed by firearm engineers to replicate the form, fit, and function of prolific polymer-framed sidearms, Laser Shot's line of simulated pistols instill unforgettable muscle memory into the user with their true-to-life trigger weight, take-up, and reset. These simulated firearms can be outfitted with the user's choice of a visible laser for standard dry-fire training or an 850nm infrared laser for integration with Laser Shot virtual firearm training simulators.

**SIM7**



**SIM M17**



**SIM8**



# NON-LETHAL

## WEAPONS & ACCESSORIES

Laser Shot's training systems are centered around marksmanship and the use-of-force continuum. To that end, a line of realistic non-lethal simulated weapons is available for officers to train on every step of de-escalation to ensure that threats in the virtual environment are met with the correct tier of force.

**TASERS** // When the trigger of the simulated X2/X26p trigger is pressed during JTS scenarios, the suspect in the simulation will react as though a taser has been deployed. This shot is then recorded in the software for AAR purposes.

X2 TASER



X26p TASER



**SIM BATON** // Constructed from a standard ASP model baton, a kinetic switch is activated when swung by an officer that elicits a corresponding response from suspects in JTS scenarios.



**OC SPRAY** // Designed to match the dimensions of standard-issued OC Spray devices, when the trigger is pressed, characters in select HD scenarios will react as if OC Spray has been deployed.



**IR FLASHLIGHT** // The IR Flashlight Trainer is an infrared laser based training device that upon activation triggers illumination of the screen in low light scenarios.



**COUNTING MAGAZINES** // Laser Shot has developed simulated magazines capable of adjustable round counts. When the number of shots fired equals the round count setting, a follower is actuated to lock the bolt or slide to the rear, replicating the physical characteristics of an empty weapon.

Officers must physically eject the magazine and press down on the actuator to reset/reload and re-insert into the magazine well to resume firing. Each magazine replicates the weight and feel of a real magazine and feature true-to-life dimensions for seamless carrying in tactical gear or duty belts for reload drills.

- ▶ Micro USB charging port
- ▶ Adjustable round counts



X26P TASER  
SIMULATED NON-LETHAL TRAINER





# CROSSHAIR

## MAGNIFIED OPTICS SIMULATOR

Crosshair™ Magnified Optics Simulator is a unique, high-fidelity training simulator for distance shooting and the use of long-range optics. By utilizing micro-displays embedded in a variety of optic housings, Laser Shot is able to offer snipers, marksmen, and observers the ability to use virtual magnified optics to execute tactical scenarios incorporating observation, cover, and engagement.

Crosshair simulated weapons or optic devices contain an always-on infrared laser that the detection camera tracks for aim data. This aim data is used to produce the magnified image that is displayed in the virtual scope. In the case of weapons, when a trigger pull is sensed, a shot will be created at the aim point. Crosshair's simulated rifle scope has functioning elevation and windage turrets along with adjustable focus and zoom rings.

- ▶ Realistic ballistics engine
- ▶ Conduct mission rehearsal
- ▶ Can replicate long range engagement inside a classroom
- ▶ Train for windage, elevation and distance factors without the need for live-fire
- ▶ Multiple weapon and optic platforms can be networked together within the same scenario for collective training
- ▶ Multiple optic models available

## WEAPONS & OPTICS

Crosshair™ technology can be adapted to any physical optic. Our team of firearm engineers are standing by to create custom training devices to meet specialized training requirements. Below are some of the most commonly used simulated optics and weapons. Multiple optic models available

**M24** // This simulated weapon features a real M24/Remington 700 action and Harris bipod for realistic precision marksmanship training.



**SIM RCO** // Magnified view is achieved using specialized lenses within the mock optic body, allowing the shooter to focus on the projection surface.



**M110** // Modified from a real weapon system, this training device mimics special purpose rifles found in all services & elite law enforcement units.



**M4 RECOIL** // When paired with the SIM RCO, this simulated weapon offers a tetherless option to train designated marksmen.



**SPOTTING SCOPE** // Ideal for sniper / spotter team training and features realistic zoom and focus adjustments.



**RIFLE SCOPE** // Features functional windage and elevation turrets, as well as standard eye relief for a long range optic of its size.



VBS3  
VIRTUAL BATTLESPACE 3

M4 RECOIL  
SIMULATED RECOIL WEAPON

MMTS COMPACT (pg. 8)  
POWERFUL MILSPEC PORTABLE SIMULATOR

# C/CAT

## COVER / CONCEALMENT ANGLE TRAINER

Laser Shot's C/CAT is a portable, modular barrier system that enables shooters to utilize cover and concealment, enhancing simulated and force-on-force training scenarios.

Barricades measure 4'x6' and are built with modularity in mind. A C/CAT can be configured to replicate obstacles found in the field, such as doorways, hallways, corners, and other architectural layouts. Barriers also incorporate 2'x2' removable panels to create apertures and windows.

Each C/CAT system is comprised of two barricades which can be set up and torn down in minutes. The entire system packs easily into a single case measuring 13'x39' and weighs only 46 lbs.

LASERSHOT

M4 SBR RECOIL  
SIMULATED RECOIL FIREARM

COUNTING MAGAZINE



## LIVE-FIRE RANGES

- 36 CONTAINER RANGE // COMPACT LIVE-FIRE FACILITY
- 37 MOBILE RANGE // TOWABLE SHOOTING SOLUTION
- 38 MSAR // MODULAR SMALL ARMS RANGE
- 39 THERMAL SHOT // LIVE-FIRE VIRTUAL TARGETRY SYSTEM
- 39 SVALIN BULLET TRAP

Shooting Range Technologies™ is a leading authority on live-fire range design, fabrication and equipment. With more than seventy combined years of industry experience, SRT personnel are uniquely qualified to take on your range project and complete it on time and within budget. We use the very latest in computer aided design technology, and operate some of the largest computer driven dual-head water jet cutting machines in North America. As the live-fire division of Laser Shot, Inc., and previously operating solely under the Laser Shot name, SRT has been designing, fabricating and equipping specialized, 360° containment / zero SDZ live-fire shooting range facilities since 2005.

RANGES TO FIT ANY NEED // Products include SRT's Modular Small Arms Ranges (MSAR), Mobile Ranges, Container Ranges, and Shoot Houses. We'll even help you with your custom conventional style range. We have built and supplied range facilities for every branch of the U.S. military, including SOCOM; foreign militaries, including the Canadian Special Forces; DHS/ ICE / Border Patrol; and The Federal Reserve; as well as law enforcement agencies and civilian/commercial customers, worldwide. Even Sturm, Ruger & Co., one of the world's largest firearms manufacturers, after exhaustive research, chose SRT to design, build and outfit their new, modular live-fire testing facilities in two of their manufacturing plants.



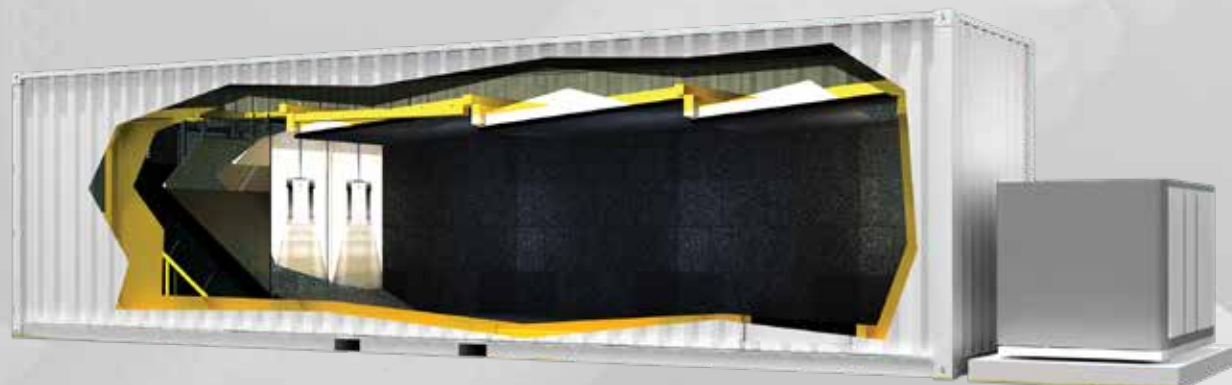
# CONTAINER RANGE

## COMPACT LIVE-FIRE FACILITY

SRT installs the latest shooting range technologies in a compact self-contained unit through the use of modified 40' shipping containers, which can be connected end-to-end for a maximum shooting distance of 100 meters. These ranges are in use by firearm manufacturers who need a testing range, police and military units who have frequent training and qualification needs.

Optionally, Laser Shot's powerful Thermal Shot™ technology can transform each Container Range into a virtual training center featuring challenging software with moving targets at simulated distances.

- ▶ Bullet trap options (granulated rubber, snail, Svalin, etc)
- ▶ HVAC system
- ▶ Soundproofing
- ▶ Exterior / interior paint
- ▶ Virtual targetry with Thermal Shot™ technology
- ▶ Interior lighting
- ▶ Instructor control station



# MOBILE RANGE

## TOWABLE SHOOTING SOLUTION

SRT's Mobile Range is a completely self-contained live-fire training facility, transportable by standard over-the-road methods, without special permitting. Available in several target distances including 7, 10, and a 25 yards/meters. A 'drive-up' solution providing on-site, live-fire training. The Mobile Range can be customized to include monorail targets, shooting booths and/or Laser Shot's Thermal Shot™ live-fire simulator. Other custom options available.

- ▶ Bullet trap options (granulated rubber, snail, Svalin, etc.)
- ▶ HVAC system
- ▶ Soundproofing
- ▶ Exterior / interior paint
- ▶ Virtual targetry with Thermal Shot™ technology





MODULAR SMALL ARMS RANGE

# MSAR

The Modular Small Arms Range (MSAR) training device provides a zero-surface-danger-zone alternative solution to the standard MILCON indoor firing range. The completed MSAR includes a weathertight enclosure, and all range systems such as OSHA/NIOSH/EPA/ASHRAE compliant HEPA-filtered ventilation, ballistic containment, sound isolation, target, lighting, communication, touchscreen controls and safety/emergency systems. Storage space and classrooms, as well as a choice in bullet trap and target styles; including patented Thermal Shot™ Live-fire Virtual Targetry are available. MSAR is a turnkey small arms training solution--Just provide a solid, level foundation/support for anchorage and utility connections and we do the rest! Modular prefabrication drastically shortens acquisition time and simplifies procurement requirements. Weapons cleaning and storage, as well as restroom/washing module options are also available.

Available with fixed or dynamic (tactical) firing lines; with full ballistic and splatter protection and NO interior dividing walls, columns or supports within the shooting area, MSAR offers a safe and affordable and small arms range solution which is superior to ranges constructed from shipping containers and to conventional indoor ranges constructed as permanent 'brick and mortar' buildings.

- ▶ 360° enclosed AR-500 armored shooting bay - no-surface-danger-zone required
- ▶ 99.97% HEPA-filtered ventilation/HVAC available in purge or recirculating style
- ▶ Meets all applicable NIOSH, ASHRAE, OSHA & EPA requirements
- ▶ Only indoor range certified for use with new 7.62mm and 5.56mm EPR (M80A1 and M855A1) ammunition
- ▶ Modular assembly and training device classification simplify and shorten procurement
- ▶ "Green" range with complete particulate and fragmented lead containment & management
- ▶ Noise pollution controls minimize the impact on neighbors and sound exposure to users
- ▶ Steel or rubber bullet trap choices using proven designs
- ▶ Multiple target options, including Thermal Shot™ live-fire virtual targetry/video wall
- ▶ Built-in Range Control Office with touch-screen automation controls

# THERMAL SHOT

## LIVE-FIRE VIRTUAL TARGETRY SYSTEM

Thermal Shot™ technology is the exclusive live-fire solution that ensures the entire target wall is tracked. All areas of the screen will accurately track and register projectiles, resulting in zero blind spots or rogue shots. As a projectile passes through or strikes the Thermal Shot™ screen, the thermal camera detects and measures the locations of those strikes, instantly mapping the strikes to the projected images. The computer responds immediately with the correlating results which may include depictions of death, wounding, chipping, splintering, or other realistic bullet impacts.

### COMPATIBLE WITH:

- ▶ Soft air
- ▶ Rubber pgr rojectiles
- ▶ Live rounds
- ▶ Training munitions (UTM®/Simunition®)

# SVALIN

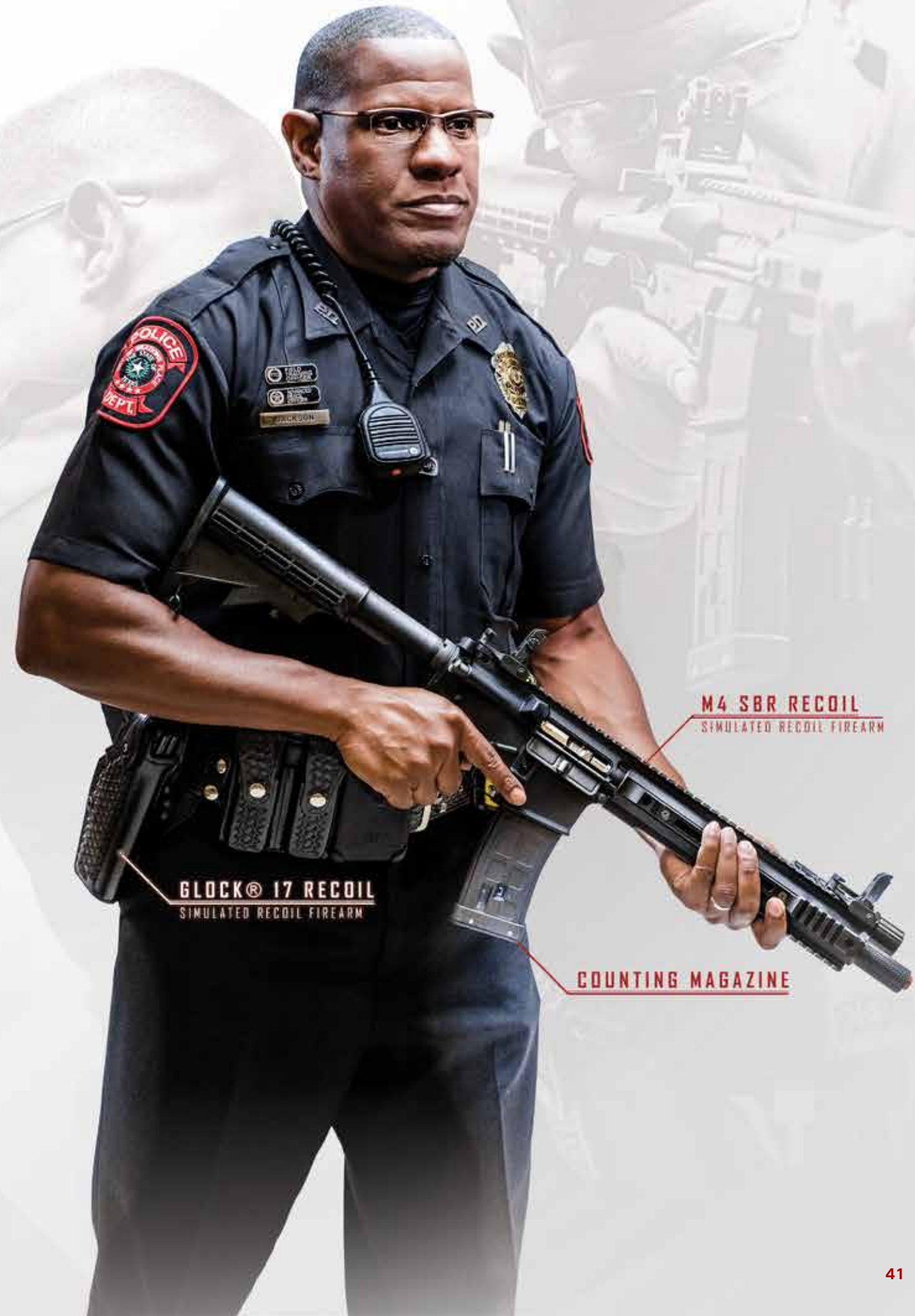
## BULLET TRAP

The Svalin Bullet Trap is the latest addition to the options offered by Shooting Range Technologies in partnership with Odin Target. Designed to maximize shooting distance and contain bullets first from varying angles, the Svalin is virtually maintenance-free while withstanding high loads (Approx. 950,000 per square meter before maintenance is required).

The Svalin is covered with a self-healing rubber later that eliminates ricochets and provides a surface for virtual targetry to be projected upon. These bullet traps can be installed in 360°, creating an immersive shooting experience.

UTILIZED BY THE  
**FEDERAL LAW ENFORCEMENT  
TRAINING CENTERS**

SINCE 2009



**M4 SBR RECOIL**  
SIMULATED RECOIL FIREARM

**GLOCK® 17 RECOIL**  
SIMULATED RECOIL FIREARM

**COUNTING MAGAZINE**

LASERSHOT.COM  
(281) 240-1122  
SALES@LASERSHOT.COM  
INFO@LASERSHOT.COM



CORPORATE OFFICE  
4214 BLUEBONNET DRIVE  
STAFFORD, TEXAS 77477

SHOOTING RANGE TECHNOLOGIES  
730 SARTARTIA ROAD  
SUGAR LAND, TEXAS 77479



**LASER SHOT**<sup>®</sup>  
SIMULATIONS